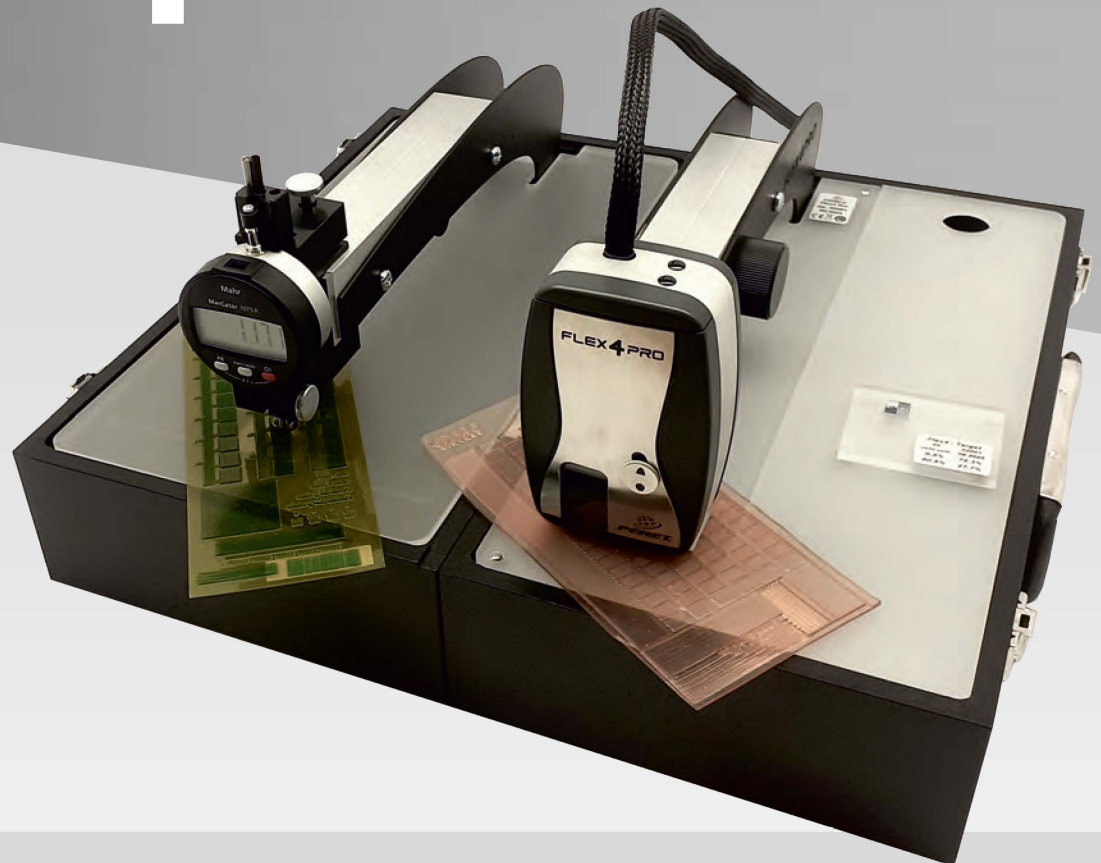


The FAG logo consists of the letters 'FAG' in a white, serif font, set against a red background that is divided into three vertical stripes.

HIGH END SOLUTIONS for PREPRESS, PRINT and PACKAGING

# FLEX4PRO

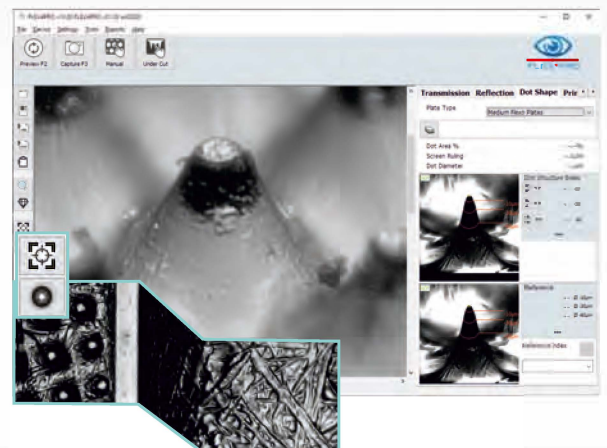


## FLEX4PRO, the new generation Flexo Analyzer

Analyze LAMS after imaging, fotopolymere plates, elastomere plates, 3D flexo dot shapes, floor cleanliness, and print samples. The self containing, cabin luggage proven box makes the device transportable. This makes it ideal for service people.

The FLEX4PRO sensor head can be un-plugged and used without the box for applications that do not require the transmission light source. For example 3D dot shape analysis or DLE Plate measurements are using reflection light sources only.

The new Software is easy to use and offers a wide range of measurement possibilities.



# FLEX4 PRO

## FLEX4PRO Flexo Analyzer

### DATA SHEET

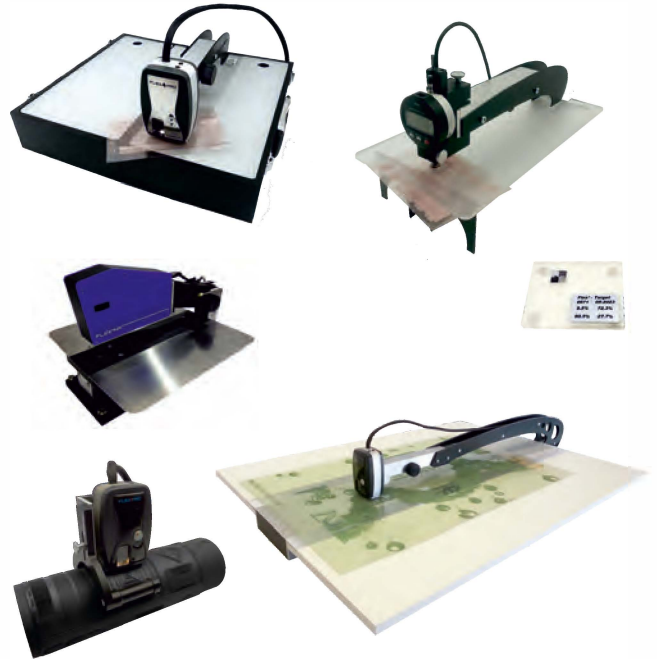
Viewing area approx..	2.2mm x 1.8mm
Resolution top view approx..	14.500ppi
Resolution 3D View approx..	22.000ppi
Focus Levels/Focus depth approx.	0µm, -125µm, -250µm, -375µm ±100µm
Illumination	LED White, RGB, IR
Camera	1,3 MPixel BW
Communication	2 x USB 2.0
Power Supply	USB 2.0 high power
Accuracy	+/- 0.01mm
Repeatability	+/- 0.2%
Measurement time typ.	1 – 2 seconds
Measurement Range Dot Area	0.2% -- 99%
Measurement Range Screen Ruling	10 LPI .. 380 LPI
Size	38cm * 21cm * 15cm
Weight	4.5kg
Calibration / Verification	Target included

Measure Dot Area%, Screen ruling, Dot Diameter, Dot Surface Area, Dot Perimeter, Edge Factor, Stain Density, Line Width, Slur Factor, Mottle, Coverage, Iso Graininess, Dot Structure Index, Shoulder Angle, Dot Diameter 3 levels, Dot height

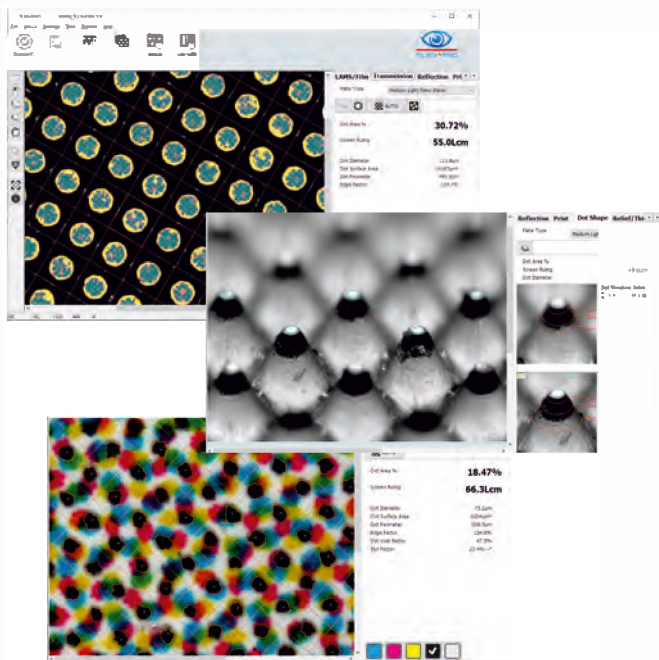
to control the Laser, plate exposure, washing, drying, finishing process, print process in flexo applications and

create documentation and reports for long term process quality control.

### SPECIALITIES



### SOFTWARE



### FEATURES

